



APPENDIX D

REPORT

Submitted to:

Report Number





Table of Contents

1.0 PICTURES	2
---------------------------	----------



1.0 PICTURES



Photo 1 View from the Project Site (east border of the Site, TOKİ view)



Photo 2 View from the Project Site (from east direction to centre of the Project Site)



APPENDIX D



Photo 3 View from the Project Site (from centre of the Project Site to east direction, TOKİ view)



Photo 4 View from the Project Site (from centre direction to north of the Project Site, Gündoğdu and Yeşilova neighbourhood view)



APPENDIX D



Photo 5 View from the Project Site (from centre of the Project Site to northeast direction, Malta neighborhood)



Photo 6 View from the Project Site (from centre of the Project Site to south direction)



APPENDIX D



Photo 7 View from the Project Site (from south of the Project Site to north direction)



Photo 8 View from the Project Site (southeast border of the Project Site, Hacı Bektaş Veli School view)



APPENDIX D



Photo 9 View from the Project Site (view of the demolished structure at the centre of the Project Site)



Photo 10 View from the Project Site (view of the partially demolished structure at the centre of the Project Site)



APPENDIX D



Photo 11 View from the Project Site (view of the partially demolished structure at the centre of the Project Site)



Photo 12 View from the social baseline survey



APPENDIX D



Photo 13 View from the social baseline survey - 2

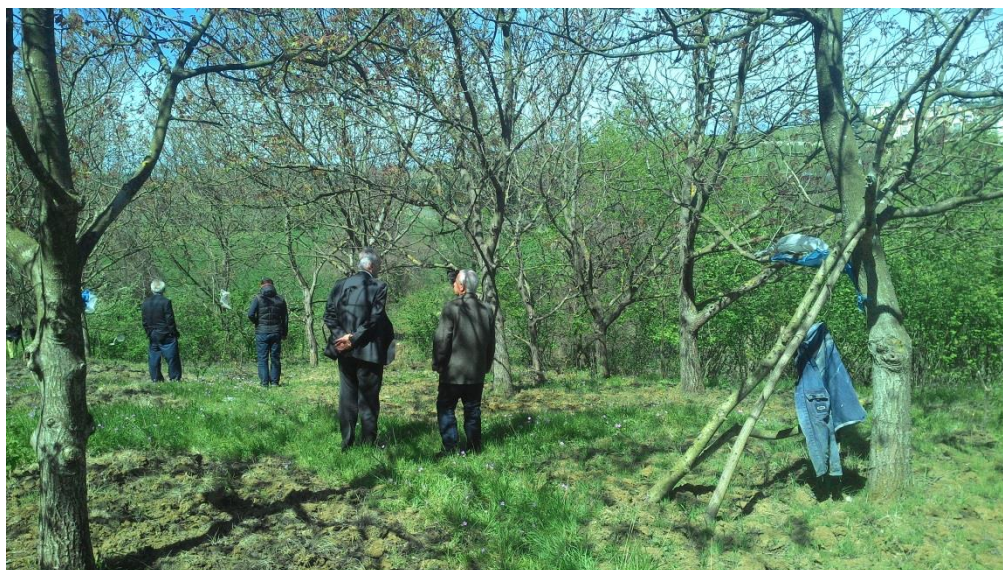


Photo 14 View from the social baseline survey – 3

As a global, employee-owned organisation with over 50 years of experience, Golder Associates is driven by our purpose to engineer earth's development while preserving earth's integrity. We deliver solutions that help our clients achieve their sustainable development goals by providing a wide range of independent consulting, design and construction services in our specialist areas of earth, environment and energy.

For more information, visit golder.com

Africa	+ 27 11 254 4800
Asia	+ 86 21 6258 5522
Australasia	+ 61 3 8862 3500
Europe	+ 356 21 42 30 20
North America	+ 1 800 275 3281
South America	+ 56 2 2616 2000

solutions@golder.com
www.golder.com

Golder Associates (Turkey) Ltd. ŞTI
Hollanda Cad. 691. Sok. Vadi Sitesi No:4
Yıldız 06550 Ankara
Turkey
T: +90 312 4410031

